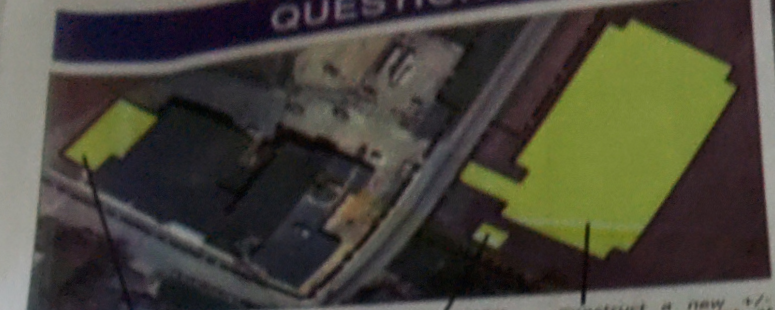


QUESTION



Build a five-classroom addition to our elementary school to provide general classroom space, dedicated specialist rooms, and restrooms for the school, and construct the front-to-back of the portable classrooms and lower-level areas.

Construct a new cold storage building.

Construct a new +/- 120-stall parking lot at the elementary school to provide additional space for events and improve safety for attendees.

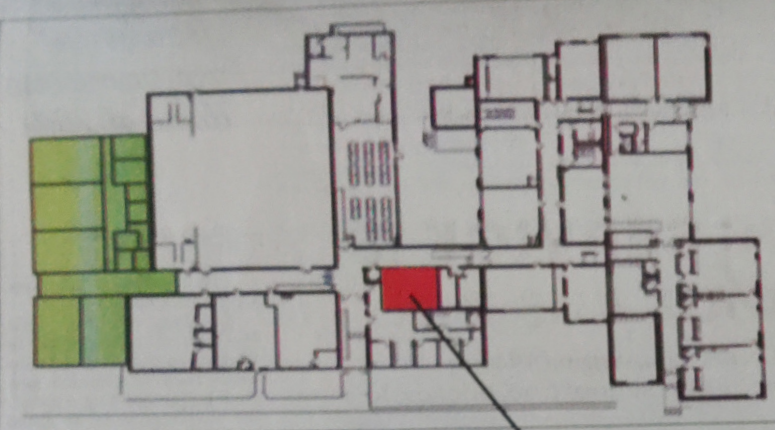


If Question Two is approved, the +/- 120-stall parking lot included in Question One would be located where the current varsity softball field resides.

Construct a new concrete pad with appropriate lighting to accommodate portable toilets during busy activity seasons.

Rebuild the varsity softball field and junior varsity softball field with one additional new ball field in a pinwheel configuration to make better use of the land and meet growing activity demand.

Construct new concessions building with appropriate storage.



Renovate the restrooms adjacent to the student dining area in our elementary school to meet ADA accessibility and age-appropriate standards.



Build a new stadium, including a football field and track, bleachers, a press box, and appropriate lighting on the west end of the secondary school site.

Construct a new +/- 170-stall parking lot at the secondary school to expand our bus drop-off and pick-up loop and provide additional event parking.

Build a 3,475 square-foot addition for a new green room, scene shop, storage area, and changing/toilet rooms.

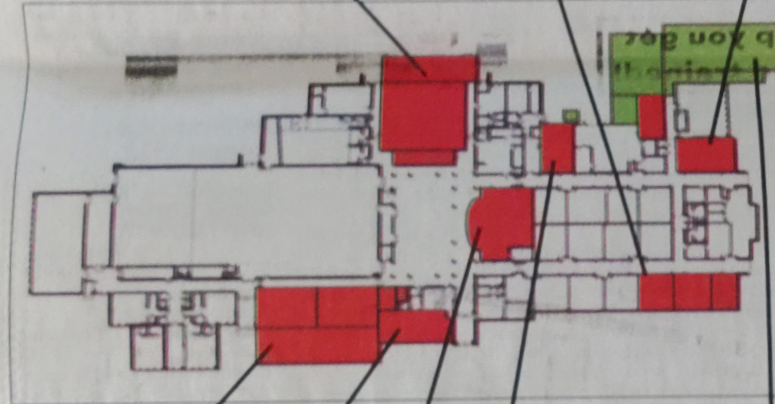
Build a new 900 square-foot addition for staff offices, practice rooms, and additional storage. This addition allows the interior walls of the band and choir rooms to be removed for additional space those programs require for large-group instruction.

Add an additional 1,900 square feet onto the proposed CTE addition included in Question One of the plan. This additional space would support agricultural, science, and FACS programming.

Complete improvements to the theater area at our secondary school, including seating replacements, lighting upgrades, an improved sound and lighting booth, and a reconfigured back-of-house area to improve better theater entrance.

Renovate existing science rooms to convert space to two classrooms and one flex classroom.

Renovate our existing Family and Consumer Sciences (FACS) classroom.



Upgrade the existing locker rooms at our secondary school to improve shower facilities, lockers, benches, and to meet storm shelter building requirements.

Reconfigure the existing administrative offices at our secondary school to provide additional specialist space, including Special Education, academic/career counseling, and mental health.

Improve the flexibility and functionality of the existing Media Center at our secondary school by creating spaces to support independent learning and small groups.

The existing Metal Shop would be converted to a new custodial/receiving space along with an additional freezer, and the existing freezer space would be renovated to provide additional cooler space.

Build a new 11,000-square-foot Career and Technical Education (CTE) addition at our secondary school to provide three new science classrooms, a new Metal/Agricultural Shop, and additional space to expand the CAD Lab to create a Clean Lab Setting.



Expand the event restrooms at the secondary school to increase fixture count, and improve accessibility and finishes.

KMS Schools' process in proposing the upcoming November bond referendum

submitted by KMS Superintendent Martin Heideberger

In a previous article, KMS Schools announced that district residents will decide whether to invest \$27.95 million into making critical improvements to both facilities on or before Tuesday, November 7, 2023. This two-question ballot focuses on providing additional and improved space to support appropriate learning environments and maximizing the limited sites to support the district's growing athletics and activities needs.

"We have been strategic and thoughtful when it comes to how our facility challenges have been identified and prioritized. The One KMS plan was not developed in a vacuum," said School Board Chairperson Jeremy Winter.

In looking ahead at Tuesday, November 7, how did

the district identify their facility challenges and the proposed plan to address them? The information below is a brief recap of those steps. Visit OneKMS.org/process for more information.

• KMS Schools' strategic plan serves as the district's guiding compass when it comes to making decisions like a bond referendum. Over the last decade, KMS Schools have evolved and changed, and the district has worked hard to identify and prioritize the challenges their facilities face when it comes to educating students.

• The district evaluated their Long-Term Facilities

Maintenance (LTFM) plan and were able to make necessary facility improvements with those state dollars such as parking lots, building systems, and more.

• The district requested staff feedback through an online survey and held in-person listening sessions for both staff and the general community.

• Assessments were completed by professional facility and planning experts to fully understand the district's schools, including a facilities assessment (physical building conditions) an educational adequacy assessment (space utilization), and a demographics study (historical and projected

enrollment).
 • Ultimately, the school board feels confident that the proposed plan best meets the educational and facility needs of the district while remaining fiscally responsible to local taxpayers.

If approved, the district would invest \$27.95 million into addressing these needs. If both questions are approved, the estimated tax impact on a \$170,600 residential home in the district would be approximately \$25 per month starting in 2024. To find your estimated tax impact, visit OneKMS.org/cost. Residents will have the opportunity to vote via mail-in ballot or on Election Day, Tuesday, November 7. Those with questions or suggestions should contact Superintendent Martin Heideberger at mheideberger@kms.k12.mn.us or by phone at 320-264-1411.

Vote Tuesday, November 7, 2023

DARTS DIESEL INC.

TRUCK & TRAILER REPAIR

DOT INSPECTIONS

LIGHT - HEAVY DUTY TOWING

SUNBURG (320) 264-5852
 WILLMAR (320) 995-6108
 ALEXANDRIA (320) 752-2800

24 HOUR SERVICE